

## Pilot Scale High Shear Granulation/Mixing System For Wet Granulation and Mixing Processes

### Alternate Installation Configurations

Portable Skid Mount or Space-Saving In-Wall Design

### Top Drive Advantages

Easy Bowl and Blade Removal and Fixed Bowl Lid for  
Superior Cleaning, Maintenance, and Safety  
Vertical-Shaft Chopper for Improved Granulation

### Flexible Design for Specific Process Optimization

Full Range of Charge and Discharge Systems  
Aqueous and Solvent-Based Processing  
Optional Vacuum Drying for One-Pot Processing  
Optional Jacketed Bowl for Product Temperature Control

### Engineered Scalability

Consistent with Production GMX Systems  
Proportional Mixer Blade Tip-Speeds  
Bowl and Blade Geometries

### Validatable, Operator-Friendly Control System

Pushbutton and Color Touchscreen Systems  
Automatic (Recipe-Driven) and Manual Operation Modes  
Compu 4<sup>®</sup> Available for Additional Data Management and  
Integration with Fluid Bed Dryers  
Multiple End-Point Detection Parameters  
Mixer Power  
Granulation Time  
Solution Amount Delivered



*Shown with In-Wall Installation,  
Optional Jacketed Bowl and Vacuum  
Drying Configuration*

The GMX-75 is designed specifically for the critical scale-up phase between process development and production. Its top-drive design allows for easy cleaning and maintenance, faster processing times, and superior user safety. Every GMX mixer is backed by Vector's comprehensive range of services, including product and process development, process scale-up and transfer, calibration and maintenance programs, and proactive project management. Engineered with the end-user in mind, the GMX-75 is the ideal solution for your pilot-scale wet granulation and mixing needs.

#### VECTOR CORPORATION

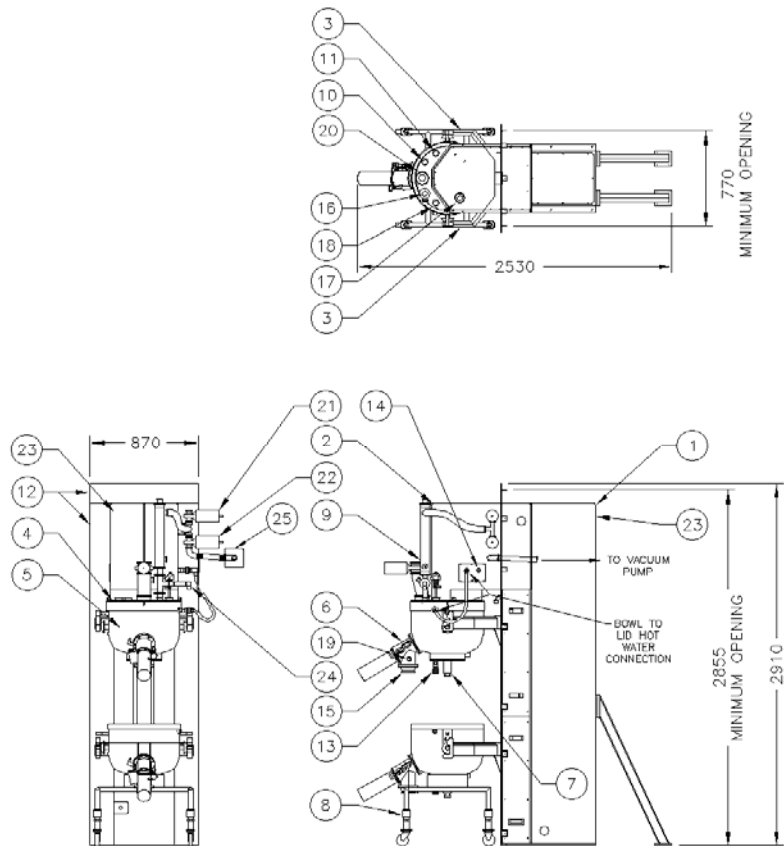
675 44<sup>th</sup> Street, Marion, IA 52302-3800

Phone: 319-377-8263 Fax: 319-377-5574

Email: [vector.sales@vectorcorporation.com](mailto:vector.sales@vectorcorporation.com)

[www.vectorcorporation.com](http://www.vectorcorporation.com)

# GMX-75



**NOTES:**  
 1. Dimensions are shown in millimeters.  
 2. Dimensions shown are design dimensions and are subject to change due to manufacturer's tolerances.

- |                    |                           |                               |
|--------------------|---------------------------|-------------------------------|
| 1. Machine Frame   | 10. View Port             | 18. Optional Product RTD Port |
| 2. Machine Head    | 11. Solution Port         | 19. Discharge Wash Port       |
| 3. Lift Arm        | 12. Wall Flange           | 20. Charge Port               |
| 4. Bowl Cover      | 13. Hot Water Supply Port | 21. Bowl Filter Vent Valve    |
| 5. Removable Bowl  | 14. Hot Water Return Port | 22. Bowl Vacuum Valve         |
| 6. Discharge Valve | 15. Discharge             | 23. Ground Connection Point   |
| 7. Bowl Drain      | 16. Wash Port             | 24. Bowl Pressure Transducer  |
| 8. Bowl Cart       | 17. Bowl Light            | 25. Vacuum Wall Duct          |

## TECHNICAL SPECIFICATIONS

Maximum Bowl Capacity: 75 Liters	Electrical Supply : 200-500 VAC, 3 Phase
Working Capacity: 25 – 50 Liters	Weight: 1360 kg (Approx.)
Mixer Speed: 0-300 RPM	Design Standards: CE, UL, NFPA, CSA
Default Mixer Speed Settings: 200 / 300 RPM	Solvent Rating: Non-Hazardous
Compressed Air Supply: 57 m <sup>3</sup> /hr @ 5.5 bar	(Hazardous Ratings Available)

Providing equipment and processing solutions around the world since 1972, Vector is a subsidiary of Freund Corporation located in Tokyo, Japan. Globally, the Freund/Vector team has thousands of system installations in the pharmaceutical, healthcare, chemical, agricultural, and food industries.